

COMMUNITY PĀNUI | UPDATE

20 MARCH 2025

Congratulations

essity a world first!

On Wednesday, March 12, Essity's Kawerau Paper Mill made history by unveiling the world's first tissue machine operating entirely on geothermal steam.

More than 100 guests celebrated the milestone opening with Essity, including Mayor Faylene Tunui, business leaders, and many local community representatives and long-serving staff.

In the opening address, Mayor Faylene Tunui congratulated the company on their stewardship. "100% Geothermal, that is absolutely something to celebrate. As we look across our environmental stewardship, kaitiakitanga role and history ... look how far we have come in 70 years."

"I feel honoured to stand in this arena, in Kawerau. We are the sole manufacturer of tissue products in New Zealand and are making that contribution to New Zealand and the world. For a small town, of some 8,000 sons and daughters, within our 24 square kilometres, it is a huge sense of pride that we have, that we can pass on to tamariki to motivate them and show them what is possible for them to accomplish."

Essity Australasia's Managing Director, Sid Takla, highlighted the significance of this \$20 million upgrade, stating, "This is the world's only tissue machine using 100% geothermal steam drying. It has enabled us to reduce the Kawerau Paper Mill's carbon footprint by 66% since 2009, including a 25% reduction with our new technology upgrade. That's the equivalent of removing 2,200 cars from the road annually."

The project enlisted 25 international experts and 120 local contractors, completing the upgrade in just 12 weeks. The Kawerau Mill, New Zealand's sole tissue manufacturer, produces popular products like Sorbent, Purex, and Handee paper towels, as well as Tork paper products for both domestic and export markets.

Takla emphasized the economic and environmental benefits, noting that the mill contributes around \$40 million annually to the Bay of Plenty economy. The geothermal steam is sustainably managed locally and makes Kawerau an ideal location for this innovative project.

The New Zealand Geothermal Association (NZGA) Chief Executive, Kennie Tsui, praised Essity, "This project demonstrates how New Zealand businesses can achieve energy security while significantly reducing carbon emissions."

Essity's Kawerau Paper Mill not only leads in innovation but also marks 70 years of manufacturing excellence in 2025, showcasing a commitment to sustainability and community development.



Top: GM Manufacturing Peter Hockley, long serving team member Joe Te Maipi, Mayor Tunui, long serving team member Brian Kingi and Managing Director Sid Takla.

Above: (left to right) Mayor Faylene Tunui, Managing Director Sid Takla and Essity's mascot Rolly

Official Mayoral Portrait unveiled

There was a small and intimate ceremony, officiated by the Iwi Liaison and Cultural Advisor Te Haukakawa (Boycie) Te Rire who blessed the official Mayoral Portrait of Her Worship Mayor Faylene Tunui on Wednesday 26 February.



The portrait had been completed for a few weeks by renowned artist Mr G as many had seen via his social media pages when he celebrated the completion of the artwork.

However, it was important for Mayor Tunui to follow the correct tikanga proposed by Iwi Liaison and Cultural Advisor Te Haukakawa Te Rire and the portrait was covered and carefully tucked away until the unveiling.

After the mihi and karakia, Kaumātua Te Haukakawa Te Rire unveiled the portrait with the support of long-serving Councillor Rex Savage.

The timing towards the end of the third year of Mayor Tunui's first term as Mayor was also important.

"It feels like the right time - we are into the third year and can look back and acknowledge the journey and the work that has been done," Her Worship Mayor Faylene Tunui said.

When asked how it felt for the portrait to sit alongside those who had led the district before her, Mayor Tunui was thankful for the opportunity and support since taking the oath of office in November 2022.

"I am especially thankful to Kaumātua Te Haukakawa Te Rire for his guidance in our work, to fellow elected members, the chief executive, staff and of course the community who all provide feedback in the decision-making considerations for Kawerau - by Kawerau," Mayor Tunui said.

A special addition to the ceremony was Kaumātua Te Haukakawa Te Rire taking the opportunity to bless the portraits of all the former Mayors, ensuring their past contribution and work for Kawerau was also acknowledged and woven into the ceremony for the current Mayor.

The day continued with Her Worship welcoming new Kiwis to the district in a citizenship ceremony attended by East Coast MP Dana Kirkpatrick and then a meeting with the MP.

Top Left: Councillor Rex Savage and Council's Iwi Liaison and Cultural Advisor Te Haukakawa (Boycie) Te Rire unveiling the mayoral portrait.

Left: Mayor Faylene Tunui and Mr G's Mayoral portrait.



Calling our Creative Community Champions

Your Creative Communities Scheme Committee are committed to growing participation, visibility and presence of the Arts for Kawerau whānau | families and warmly welcomes project applications for Round 2 of the 2024/5 scheme, up to 3pm on 28 March. Your committee has been working closely with the Creative NZ national and regional team to secure resourcing for Kawerau and we need you.

Be it Matariki, kapa haka, community choirs, hip-hop groups, musical performances or events, poetry recitals, printmaking, script-writing, crafts, clay and/or knitting, photography and/or film, classic, modern or traditional dance, tukutuku, whakairo or kowhaiwhai for marae, weaving, pottery, carving, wearable arts or public artworks through wananga, workshops, performances or exhibitions – the Creative Communities Scheme is here for you.

Project applications are invited by groups or individuals to help your Creative Communities Committee support those within our hāpori | community keen to share their gifts and talents with others as a celebration of our creative, artistic, cultural diversity, to capture and convey Kawerau Yesterday, Kawerau Today and Kawerau Tomorrow.

If you have any questions or need help or pointers to fill out an application, contact our Economic and Community Development Manager, Lee Barton on 07 306 9009



LYNDAL KENNEDY Kawerau Neighbourhood Support Area Coordinator

Earlier this year, Kawerau Neighbourhood Support was reestablished with a new committee and Lyndal Kennedy employed as the new Neighbourhood Support Kawerau Area Coordinator.

Neighbourhood Support is a nationwide community-led movement that brings people and neighbourhoods together to create safe, resilient, and connected communities. Neighbourhood Support believes that a well-connected community helps to improve safety, resilience, and wellbeing.

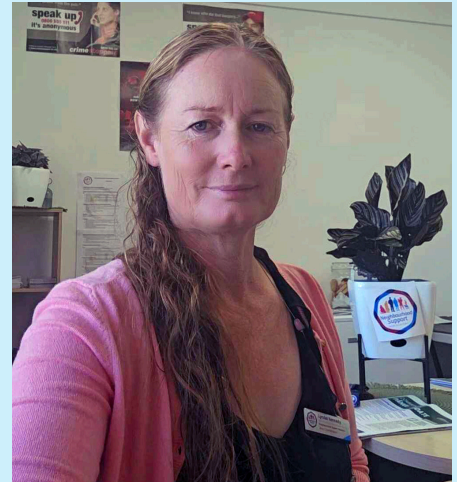
Kawerau born and raised, Lyndal Kennedy is passionate about Kawerau and giving back to the community. Lyndal is community-minded and enjoys volunteering through different initiatives most recently with LandSAR (Land Search and Rescue). Lyndal also volunteers with the Kawerau Rotary group, Bay of Plenty Conservation board, Onepū community park, Rotorua Botanical society and was a member of the Edgcumbe College Board of Trustees as chair. Lyndal is also a part of a variety of other volunteering initiatives.

Lyndal looks forward to making a difference through her work with Kawerau Neighbourhood Support.

Since Lyndal started with Kawerau Neighbourhood Support, 50 new people have signed up!

As part of the revitalisation, Kawerau Neighbourhood Support has new initiatives, including a theme for each month, February's motto was "love where you live" with the goal of encouraging neighbourhood support, improvement and beautification. Over the month Lyndal volunteered with the Friends of Stoneham Walk, a community group. Every Thursday morning the group helps tidy the gardens at Stoneham Walk.

March's motto is "connected communities" which aims to encourage residents to strengthen bonds and build safer, more resilient neighbourhoods through events like Neighbours Aotearoa and by fostering face to face connections.



For more information, to check if your street is signed up or to sign up, please contact Lyndal:

☎ 027 353 4840

✉ nskawerau1@gmail.com

🌐 neighbourhoodsupport.co.nz

👤 Or pop into the KEA building and visit Lyndal Tuesday – Friday



Upcoming Gambling Policy consultation

On Wednesday, 26 February, Council discussed the report outlining the proposed review of the Gambling Policy which aims to reduce gambling harm in the community.

Since 2017, Kawerau has had a 'sinking lid' policy on the number of gambling machines permitted in Kawerau. This has reduced the total number of gambling machines from 54 to 36. Also, the number of gambling venues has reduced, halving from four to two venues in the same period. The report included a social impact assessment received by the community on request by the Council in late 2024, which outlines there is a high risk from gambling harm in the district.

Council has resolved to merge the Gambling Venues Policy and Board Venue Policy and ensure the focus remains on reducing gambling machine numbers. At the 26 March Council Meeting, the draft policy will be tabled with Council and then we will be asking the community for your feedback.

Consultation will be carried out from 31 March to 5 May 2025.

STAND FOR COUNCIL

Do you think you can advocate for the needs of our community? Do you want to make a difference and be involved in shaping the future of our local community? Do you want to contribute to the development and improvement of our community? Do you want to contribute your business and personal skills to help the community realise its potential?

If you answered yes, to any of those questions above, you should think about standing in the upcoming 2025 Local Body Elections.

Council will be holding two candidate nights, for people thinking about standing. We urge you to attend and ask any questions you may have.



CANDIDATE NIGHTS: WEDNESDAY 28 MAY IN THE CONCERT CHAMBER 5PM – 8PM

Outward Bound

At the start of January, two former Youth Councillor, Hohia Heurea and Homer Abante, embarked on a 21-day Outward Bound course, sponsored by the Mayor’s Taskforce for Jobs.

Both Hohia and Homer faced both mental and physical challenges. Each morning at the base began with physical training session and a 3km run, followed by a refreshing dip in the ocean.

Every day was packed with action-filled adventures, focusing on leadership and teamwork. Activities included kayaking, sailing, solo camping, and hiking the Queen Charlotte Track, they constantly pushed their limits to see how far they could go. “Outward Bound was a life changing experience” said Hohia and Homer.

During the 21 days, participants discovered their strengths and learned how to apply these skills to everyday life. Outward Bound aims to instill a sense of independence, the ability to set achievable goals, and the capacity to work well within a team, preparing participants to face any challenge that comes their way.



Above: (left to right) Hohia Heurea and Homer Abante on their way to the 21 day Outward Bound course

Promoting Sustainability in Kawerau Schools

Six Kawerau schools and preschools are improving their sustainability through participation in the Paper4Trees and Zero Waste Education programmes.

In 2023/24 Kawerau schools:

- Recycled 13 tonnes of paper and cardboard
- Planted 59 trees around their kura | schools
- Reduced the amount of CO2 going into landfills by 73 tonnes
- Saved 109m3 of space in the landfill

Paper4trees encourages schools to recycle paper and cardboard by providing free 30-litre classroom recycling bins. For every two cubic metres of paper and cardboard recycled, schools are rewarded with a native tree to plant. This programme not only reduces landfill waste but also teaches children to recycle.



Zero Waste Education teaches students from preschool to Year 8 about recycling, composting, and resource sustainability, through games and activities. The programme teaches students the importance of sustainable resource use and the impact of waste on our environment.

Important dates and meetings

Wednesday 26 March, 9am

Ordinary Council Meeting

Wednesday 26 March

Proposed hearing for the Draft Easter Sunday Shop Trading Policy

31 March to 5 May 2025

Gambling Policy Review Consultation process

Friday 11 April

Consultation Period and Submissions Open for the Long Term Plan 2025-2034

Friday 11 April

Consultation Period and Submissions Open for Local Water Done Well

Friday 11 April, 1:30pm - 2:30pm

Meeting with Grey Power for the Long Term Plan and Local Water Done Well consultation, Concert Chamber

Tuesday 15 April, 12noon - 2pm

Industry/Business Forum, Concert Chamber

Thursday 17 April, 10am - 12noon

Public Meeting for the Long Term Plan and Local Water Done Well, Rautahi Marae

Thursday 8 May 10am – 12noon

Drop-in Session, Kawerau Markets



Thank you for your submissions

Thank you to everyone who took part in the consultation and engagement process for the Draft Easter Sunday Shop Trading Policy. Council received three submissions.

The Draft Easter Sunday Shop Trading Policy hearing will be held on Wednesday 26 March 2025.